

Citroën C4 Picasso



Euro NCAP Category
SMALL MPV

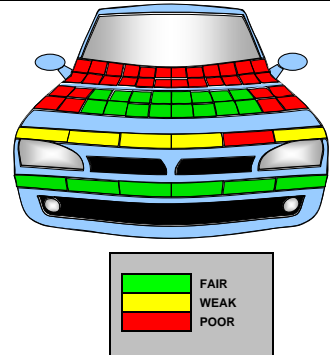
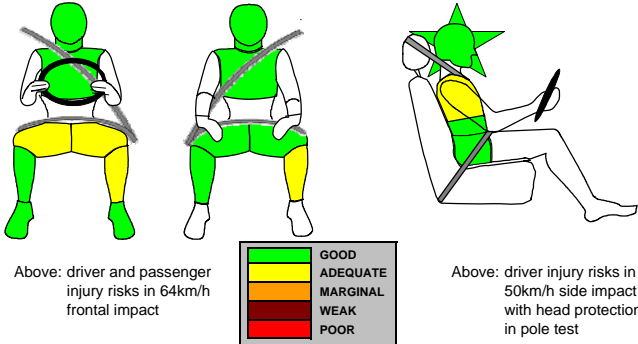


TEST RATINGS

ADULT OCCUPANT PROTECTION	SCORES:	FRONT	15 (94%)
★★★★★		SIDE	18 (100%)
		SEATBELT REMINDER	2
		OVERALL	35
CHILD OCCUPANT PROTECTION	SCORE:		35 (71%)
★★★★☆			
PEDESTRIAN PROTECTION	SCORE:		16 (44%)
★★★☆☆			

ADULT OCCUPANT PROTECTION

PEDESTRIAN PROTECTION



TEST RESULTS IN FULL

FRONTAL IMPACT HEAD	
Driver airbag contact	stable
Passenger airbag contact	stable
Steering Wheel	
rearward displacement	6mm
upward displacement	16mm
lateral displacement	17mm to the right
FRONTAL IMPACT CHEST	
Contact with steering wheel	none
Screen pillar rearward	9mm
Passenger compartment integrity	stable
FRONTAL IMPACT UPPER LEGS, KNEES AND PELVIS	
Stiffer structures present	yes: steering column and adjuster mechanism
Concentrated knee loading	none
FRONTAL IMPACT LOWER LEGS, FEET AND ANKLES	
Rearward pedal displacement	brake - 38mm
Upward pedal displacement	none
Footwell rupture	none
SIDE IMPACT AIRBAGS	
Head protection airbag	yes
Torso protection airbag	yes
CHILD PROTECTION	
Restraints used	
18 month old	Britax-Römer BabySafe Universal, rearward-facing using adult seatbelt
3 year old	Britax-Römer Duo, forward-facing using ISOFIX anchorages and top-tether
CHILD RESTRAINTS FRONTAL IMPACT	
Airbag disabling/warning label	Seven-language text and pictogram warning label permanently attached to both sides of the passenger's sun visor
Forward head movement	
18 mth old (behind passenger)	vulnerable
3 year old (behind driver)	protected
Chest Protection	
18 mth old: total load	good
vertical load	fair
3-year-old: total load	fair
vertical load	good
CHILD RESTRAINTS SIDE IMPACT	
Head protection	
18 mth old (struck side)	protected
3 year old (non-struck side)	protected
Head acceleration	
18 mth old	good
3 year old	good

CAR TESTED



Make, model and hand of drive	Citroën C4 Picasso DV6, LHD
Body type	5-door, 7-seat MPV
Model year	2006
Kerb weight	1539kg
Chassis number from which Euro NCAP rating applies	applies to all C4 Picassos
Safety Equipment	Driver and passenger dual-stage frontal airbags; side impact airbags; head-protecting curtain airbags; driver's knee airbag; front seatbelt dual pre-tensioners; front seatbelt load-limiters; ISOFIX and top-tether anchorages in front passenger seat and all row 2 seats; front and rear seatbelt reminder system; ABS, ESP, emergency brake-assist (BAS), active speed-limiter.



Citroën C4 Picasso

COMMENTS

FRONTAL IMPACT	The Picasso is fitted with a driver's knee airbag as standard. In such cases, manufacturers have the opportunity to demonstrate to Euro NCAP that the level of protection seen in the test is provided across the whole of the fascia and for occupants of different weights and sizes. Euro NCAP considers some of the structures in the Picasso's dashboard to be a potential hazard to the driver's femurs as, in this case, Citroën chose not to present evidence to the contrary.
SIDE IMPACT	The driver's chest lost a fraction of a point but the rounded score for side impact protection was a maximum 18.
CHILD PROTECTION	In the frontal impact, the rearward-facing child restraint tipped forward, exposing the head of the 1½ year old dummy which then contacted the rear of the driver's seat. As a result, the car lost all points for the head protection of that dummy. The passenger's airbag can be disabled by means of a switch. However, information presented to the driver regarding the status of the airbag was not clear enough. The car was rewarded for being equipped with ISOFIX and top-tether anchorages in the front passenger seat and in all three seats in row 2 although the presence of those anchorages was not clearly indicated.
SEATBELT REMINDER	The Picasso is fitted with a seatbelt reminder system for the front and rear seats. The system for the front seats was satisfactory but the information presented regarding the status of the rear seatbelts was inadequate.
PEDESTRIAN PROTECTION	The bumper scored maximum points for the protection it offered to pedestrians' lower legs. The part of the bonnet likely to be struck by a child's head was also rated predominantly 'fair'. However, that part of the bonnet which might be struck by an adult's head scored no points for the protection it offered.

Euro NCAP's rating applies fully only to the model with the specifications detailed here. Some equipment may not be fitted as standard to all versions in all countries. You should ensure that your car is fitted with the safety equipment you require.

